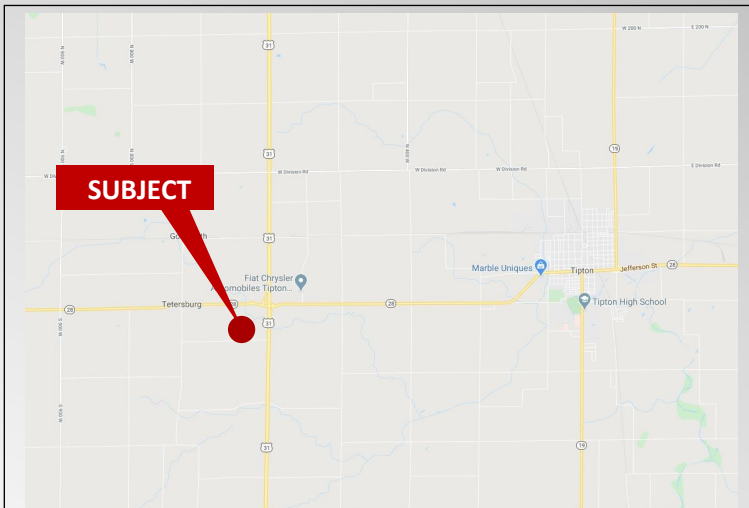


# Land For Sale

US 31 @ S.R. 38 Land

6022-6026 W State Road 28 Tipton, IN 46072

±35.66 AC



For more information regarding this property, please contact:

**Jim Austin**

Vice President Brokerage

Cell: 317-294-9911

jaustin@revelunderwood.com

AVAILABLE FOR SALE

**\$1,100,000**

±35.66 Acres of Developable Land

### Property Highlights:

- ◆ Located off US 31 and S.R. 28 in Tipton, Just South of Kokomo.
- ◆ New US 31 Interchange
- ◆ Across Street from Love's Truck Stop
- ◆ Near FCA Transmission/Chrysler Plant
- ◆ Accessible off S.R. 28
- ◆ Detention on-site
- ◆ Utilities near site



REVEL & UNDERWOOD

15481 Union Chapel Road Suite 100  
Noblesville, IN 46060

Office 317-578-9400

Fax 317-578-9402

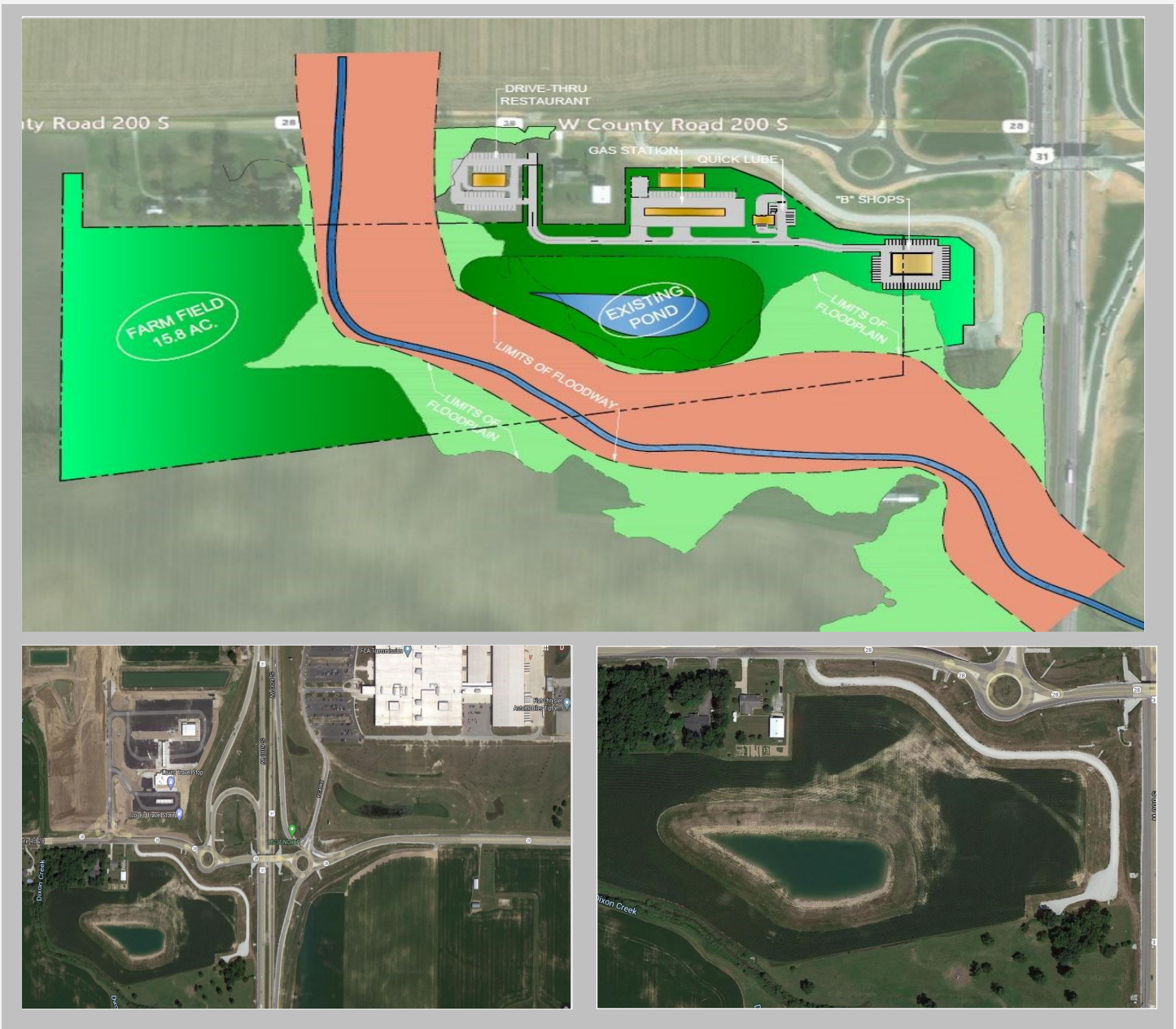
www.revelunderwood.com

*Information contained herein has been obtained from sources deemed reliable but is not guaranteed and is subject to change without notice*

# US 31 and S.R. 38 Land

6022-6026 W State Road 28 Tipton, IN 46072

±35.66 AC



REVEL & UNDERWOOD

15481 Union Chapel Road Suite 100  
Noblesville, IN 46060

Office 317-578-9400  
Fax 317-578-9402  
[www.revelunderwood.com](http://www.revelunderwood.com)